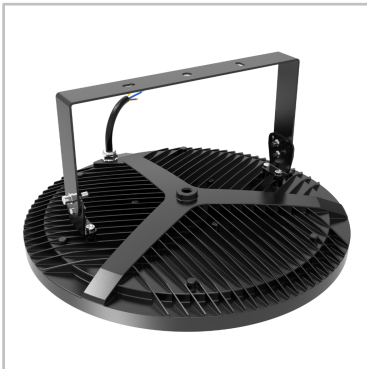


X2-Series



KEY ADVANTAGES

- Flicking-free
- Wattage from 100W to 200W optional
- High energy savings compared to systems with traditional discharge lamps
- Robust design
- High visual comfort
- No hazardous materials
- Fast ROI thanks to long life span and reduced maintenance
- Compact housing optimised for heat dissipation and reduced dust accumulation
- Dedicated range of mounting accessories

TYPES OF APPLICATION

- CAR PARKS
- LARGE AREAS
- INDUSTRIAL HALLS & WAREHOUSES
- SPORT FACILITIES



GENERAL INFORMATION

Driver included	Yes
CE mark	Yes
RoHS compliant	Yes
Safety features	Open circuit protection Short circuit protection Overvoltage protection
Testing standard	LM-79-19 (all measurements in ISO17025 accredited laboratory)

HOUSING AND FINISH

Housing	Aluminium
Protector	Glass
Glass	Tempered glass
Housing finish	Electrostatic polyester powder coating
Standard colour(s)	RAL 9017 black
Tightness level	IP 65
Impact resistance	IK 07

OPERATING CONDITIONS

Operating temperature range (Ta)	-30°C to + 40°C
Operating Humidity	10-90%RH
Mounting Option	Loop Hanging Bracket Mounting
Warranty	3 years

PERFORMANCE

Power	100W/150W/200W
Efficacy	120lm/W
Start Time	≤0.2S

ELECTRICAL INFORMATION

Electrical class	Class I EU
Nominal voltage	220V-240V 50/60Hz
Power factor (at full load)	>0.95
Surge protection options (kV)	4KV-Line-Line 4KV-Line-Earth
Total Harmonic Distortion(THD)	IEC 61000-3-2 Class C <20%

For fixed Class 1 luminaires, overvoltage protective devices which comply with IEC 61643-11 shall be disconnected from the circuit.

withstand voltage	1.5KV 60S 10mA
-------------------	----------------

OPTICAL INFORMATION

LED Type	SMD2835
Beam Angle	120°
Recommended installation height	4m to 10m
Color Tolerance	Ra70 ≤7 Ra80 ≤5
LED colour temperature	5000K / 5700K / 6500k
Colour rendering index (CRI)	CRI>70 standard CRI>80 optional
Upward Light Output Ratio (ULOR)	0%

※Ra measurement tolerance is ±2.

LIFETIME OF THE LEDS @ TQ 25°C

All configurations	
L70B10	>30,000h

STANDARD VERSION

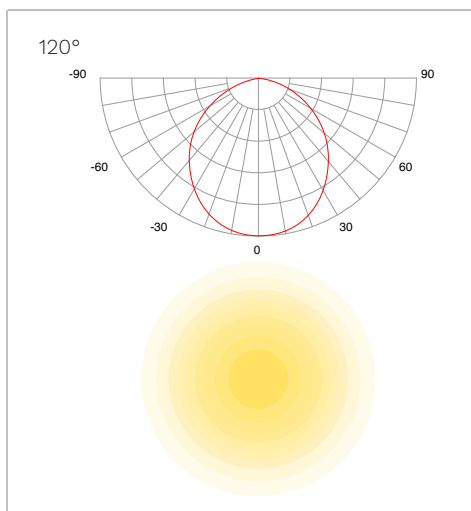
POWER	LUMENS	EFFICACY
100W	12,000LM	120LM/W(Ra70)
	11,000LM	110LM/W(Ra80)
150W	18,000LM	120LM/W(Ra70)
	16,500LM	110LM/W(Ra80)
200W	24,000LM	120LM/W(Ra70)
	22,000LM	110LM/W(Ra80)

※The Performance Data is tested base on 230VAC, 120° and 5000K for all versions
 ※Power Consumption Tolerance ±5% (Apply to all versions)
 ※Lumen Efficiency Tolerance ±5% (Apply to all versions)

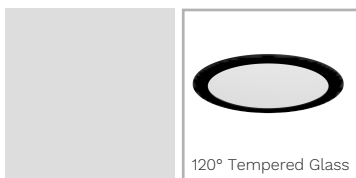
PACKAGING

POWER	PACKAGE SIZE	QTY/CTN	SINGLE PIECE VOLUME	NET WEIGHT	GROSS WEIGHT	20GP	40HQ
100W	L630*W303*H310mm	10PCS/CTN	0.0592m ³	10.7kg	14kg	4390pcs	11150pcs
150W	L630*W343*H348mm	10PCS/CTN	0.0752m ³	15.1kg	19.1kg	3460pcs	8780pcs
200W	L630*W385*H393mm	10PCS/CTN	0.0953m ³	20kg	24.6kg	2730pcs	6920pcs

LIGHT DISTRIBUTIONS

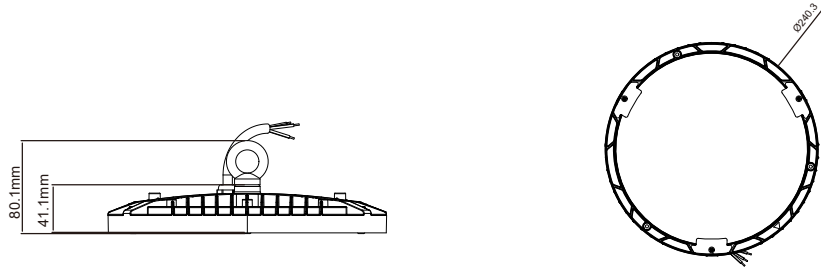


OPTIONAL ACCESSORIES

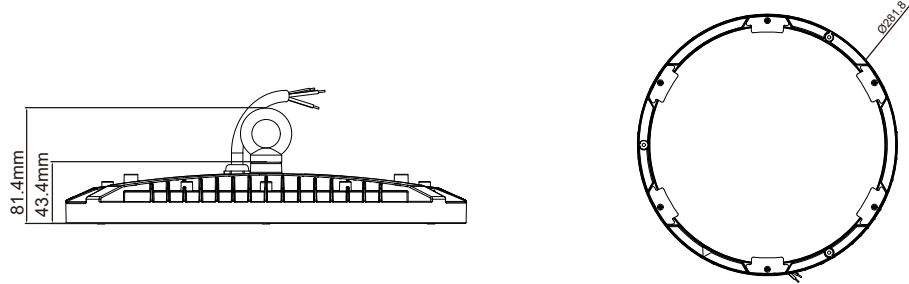


⚠ Connecting the cable requires an IP65 Tightness level

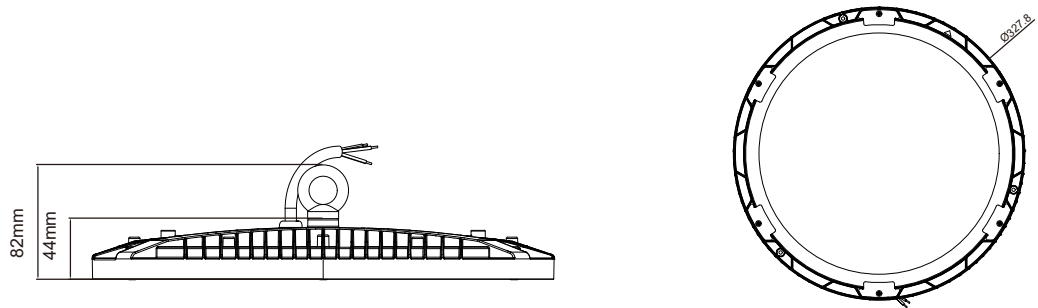
100W



150W

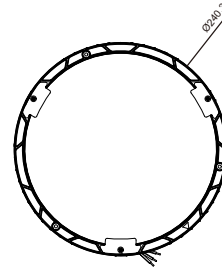
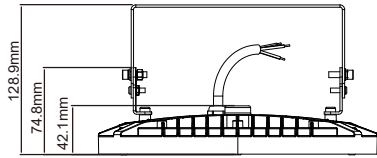


200W

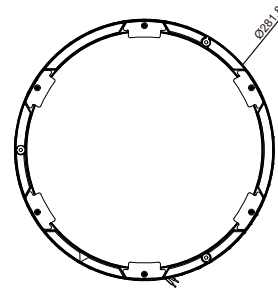
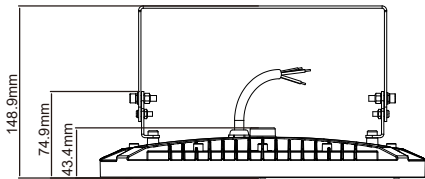


⚠ Connecting the cable requires an IP65 Tightness level

100W



150W



200W

